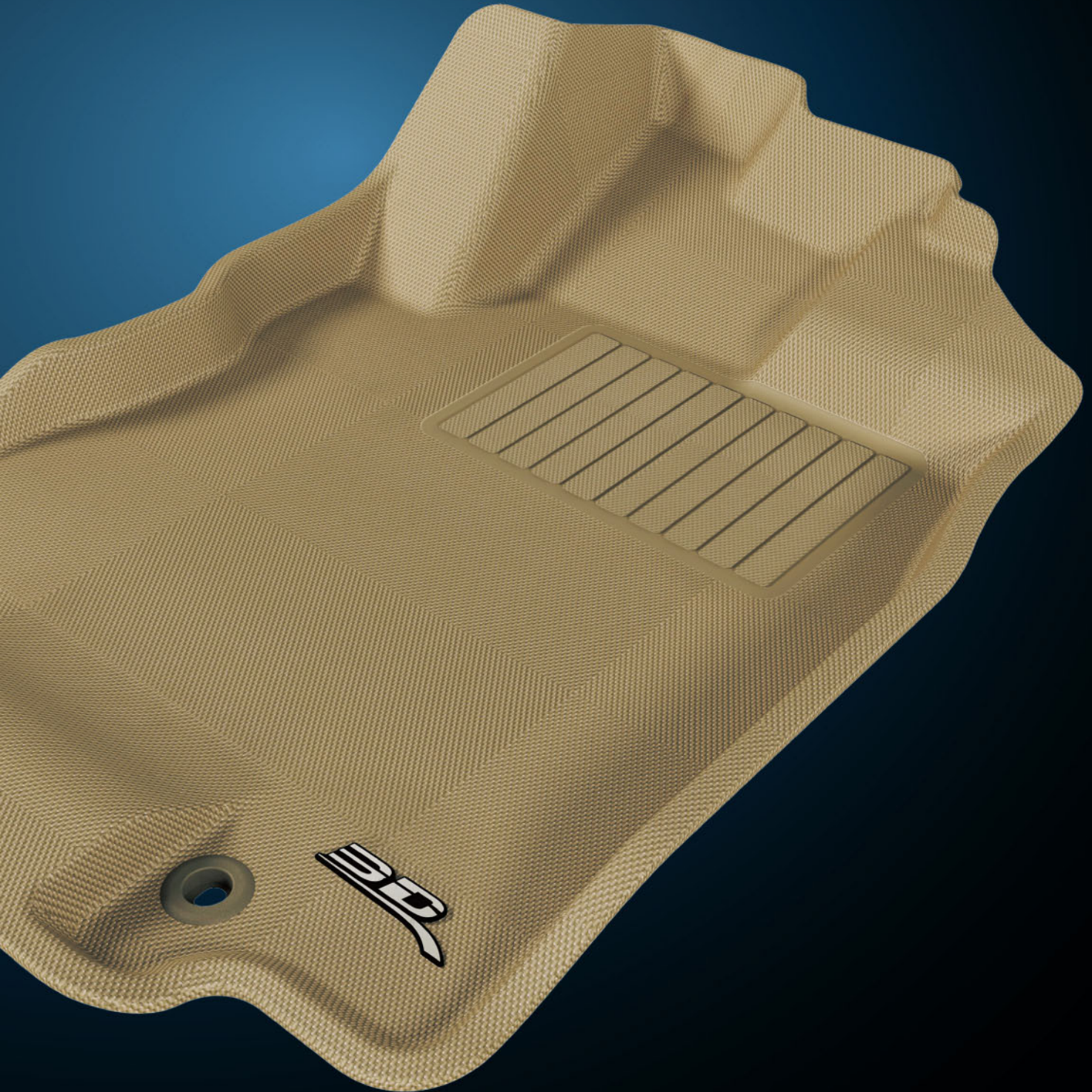


3D[®]

MAXpider[™] **Mat**



MAXpiderTM Mat

Absolute Grip Patented Maxpider fiber bottom layer prevents the mat from sliding and provides the ultimate safety.

Patented 3-layer structures:

Ultimate Safety Design! **Brand New Invention!**

Surface Layer:

Strong, durable, wear resistant, and will not deform over time. Various surface colors are available to match your interior, adding value and personalization.

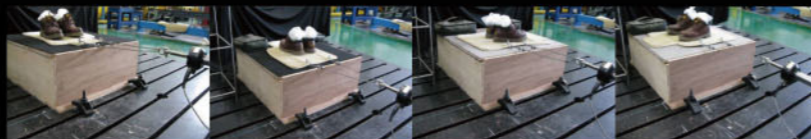
Inner Layer:

Made up of XPE and PET into two types: layered XPE and mesh PET. Layered XPE is waterproof and sound insulating as well as being shock absorbent and thermostatic. The mesh PET is designed to absorb the sound within a vehicle, which help reduces noise. It is also ventilated, which keeps moisture from accumulating underneath the carpet.

Bottom Layer:

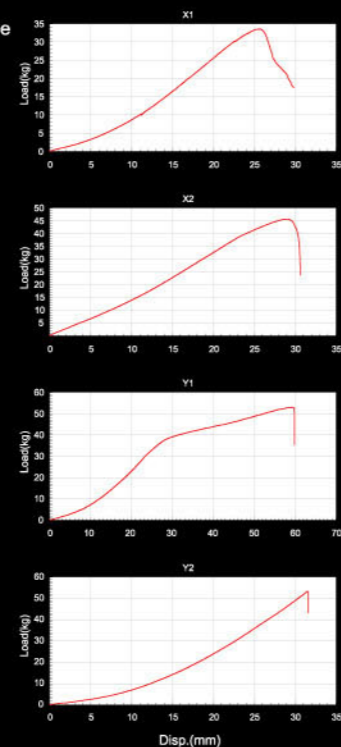
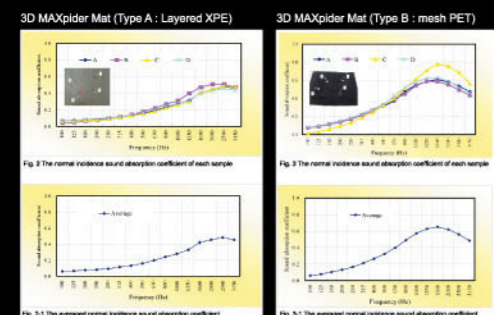
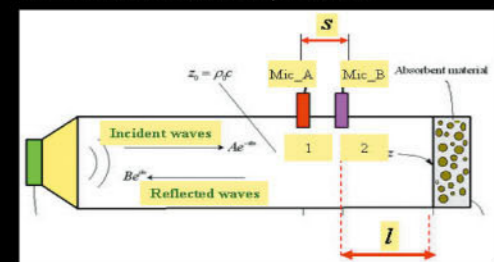
Our patented MAXpider fibers grip all types of carpet and do not slip, providing the ultimate safety. They will not damage your original carpet either.

In addition MAXpider's three layer design, tension testing carried out by the ARTC shows that at 40kg, the carpet does not move. Afterwards, further changes were made and the ARTC increased the force to 50kg with the same result. This shows the grip that is offered by MAXpider is safe. (Tension Test > 53kg)



Meanwhile, the ARTC made a detailed acoustic detection of the mat. We utilized the measurement-points arrangement of two-microphone impedance tube method of testing (Figure 1), and test reports are as follow. Both reports pointed out that the 2nd layer of the mats absorbed sound, where the random samples presented significant local sound-absorbing effect (see Figure 2/3, ABCD four colors). The middle layer, made up of XPE, was shown to relatively reduce noise.

Test Lab.: Automotive Noise Testing Laboratory, ARTC
Test Item: Normal Incidence Sound Absorption Coefficient

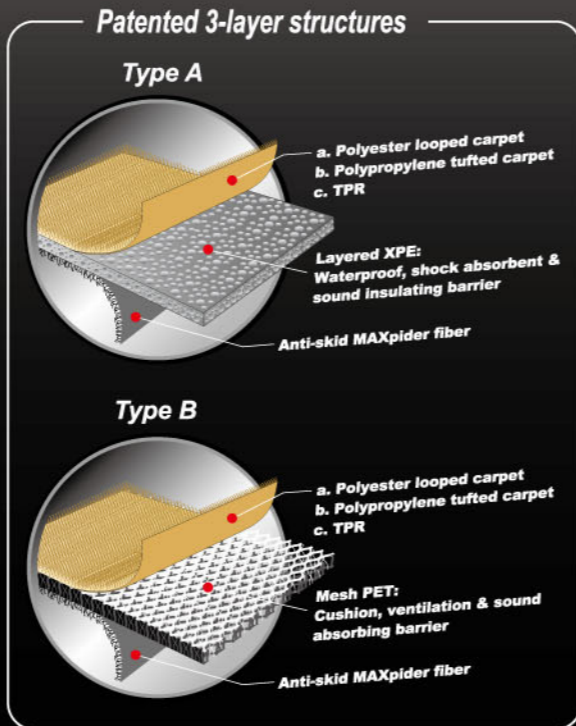
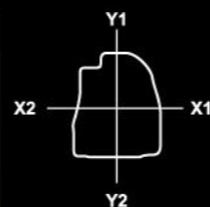


Slipping Test

Test Procedure:

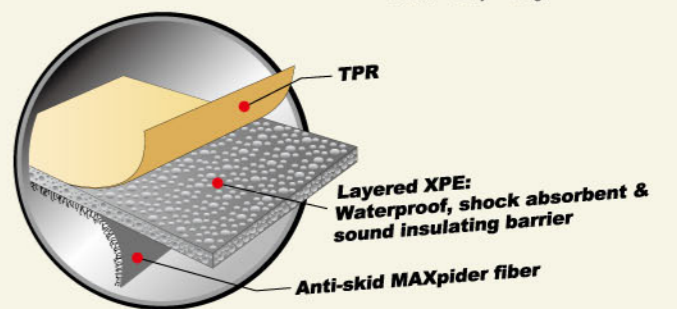
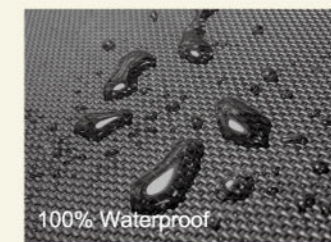
The 3D MAXpider Mat is laid on a carpet and pulled horizontally in the directions X1, X2, Y1 and Y2 at the velocity of 30mm/min until the product slips or the pulling force reaches the test machine's upper limit of 53kgf.

Direction	Force (kgf)	Slide
X1	34	YES
X2	46	YES
Y1	53	NO
Y2	53	NO



Car Molded MAXpider Mat **KAGU MAT (3D) STANDARD PATTERN**

KAGU means "very durable" or "long lasting". We developed this patented material and patent pending process to make the revolutionary car floor mat both in custom size and universal size. It is totally environmentally friendly without PVC, plasticizer and glue with no PAH's harmful elements. It is molded by a precise mold for custom-fit.



MAXpider Mat / 666-2 **UNIVERSAL MAT (2D)**

DIY: Engineered to fit virtually all vehicles.

Durable: Unique KAGU texture surface. It is durable and will not crack, curl or deform over time.

Dirt proof: Specially designed water channels trap and hold mud, snow, water or grease. 100% waterproof and easy to clean and dry

Safe: Anti skid bottom layer prevents the mat from sliding and provides the ultimate safety.

Environmental Friendly: Manufactured with environmental friendly materials that are non toxic, odorless, and sound isolating.

China Patent No.: ZL200920268859.5, ZL200920266923.6
Taiwan Patent No.: M382997, M381550
Japan Patent No.: 5424998
Canada Patent No.: 2721464
Russia Patent No.: 2415034, 2413800
South Africa Patent No.: 2010/00458
Czech Republic Patent No.: 21638
Nigeria Patent No.: NG/C/10/431
Korea Patent No.:10-1051591
Iran Patent No.:70463
Worldwide Patented or Patent Pending (42 Countries)
ISO/TS16949



China Patent No.: ZL200920268859.5, ZL200920266923.6
 Taiwan Patent No.: M382997, M381550
 Japan Patent No.: 5424998
 Canada Patent No.: 2721464
 Russia Patent No.: 2415034, 2413800
 South Africa Patent No.: 2010/00458
 Czech Republic Patent No.: 21638
 Nigeria Patent No.: NG/C/10/431
 Korea Patent No.: 10-1051591
 Iran Patent No.: 70463
 Worldwide Patented or Patent Pending (42 Countries)
ISO/TS16949



MAXpider Mat / 555-3 UNIVERSAL MAT (2D)

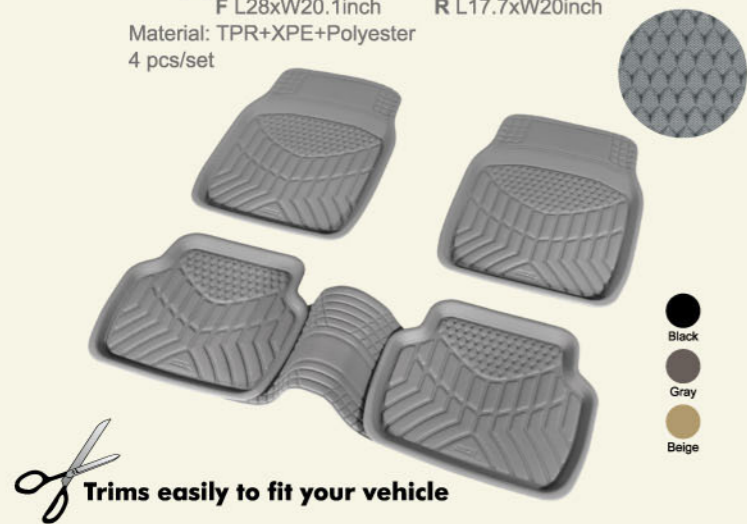


KAGU Mat 555-3

Item No.: 2389
 Size: **S** F L62.5xW46cm R L41.5xW46cm
 F L24.6xW18.1inch R L16.3xW18.1inch
 L F L71xW51cm R L45xW50.8cm
 F L28xW20.1inch R L17.7xW20inch
 Material: TPR+XPE+Polyester
 4 pcs/set

Executive Mat 555-3

Item No.: 2390
 Size: **S** F L62.5xW46cm R L41.5xW46cm
 F L24.6xW18.1inch R L16.34xW18.11inch
 L F L71xW51cm R L45xW50.8cm
 F L28xW20.1inch R L17.72xW20inch
 Material: Polyester+XPE+Polyester
 4 pcs/set



KAGU 555-1

Item No.: 2360
 Size: **S** F L69xW48cm R L46xW48cm
 M F L69xW48cm R L49xW48cm
 Material: TPR+XPE+PET
 5pcs/set



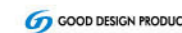
Trims easily to fit your vehicle



Custom-Fit CARGO LINERS

- 100% waterproof, 3D design to prevent stains and dirt penetrating your original carpet.
- Environmentally friendly materials that is non toxic and odorless.
- Custom-fit by specific molds.
- Easy carry and maintenance.
- Durable, non-cracking & tearing.

3D: Foldable



**100%
WATERPROOF!**



XPE



KAGU



Looped polyester

MAXpiderMat™

China Patent No.: ZL200920268859.5, ZL200920266923.6
 Taiwan Patent No.: M382997, M381550
 Russia Patent No.: 2415034, 2413800
 South Africa Patent No.: 2010/00458
 Czech Republic Patent No.: 21638
 Nigeria Patent No.: NG/C/10/431
 Korea Patent No.: 10-1051591
 Iran Patent No.: 70463
 Worldwide Patented or Patent Pending (42 Countries)
ISO/TS 16949

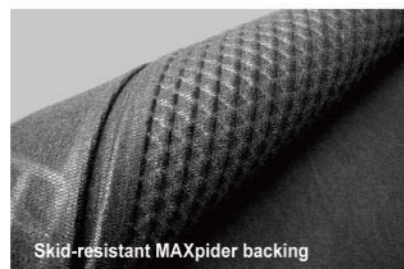
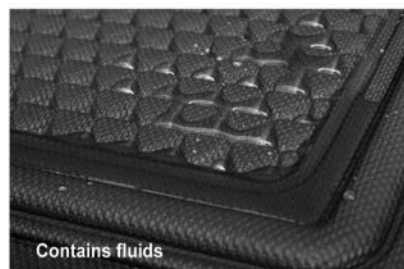
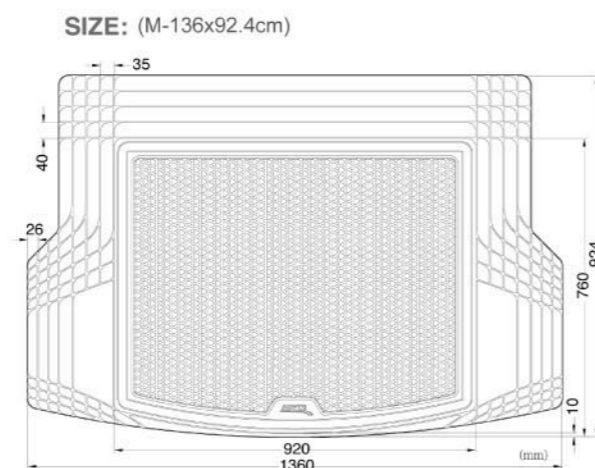
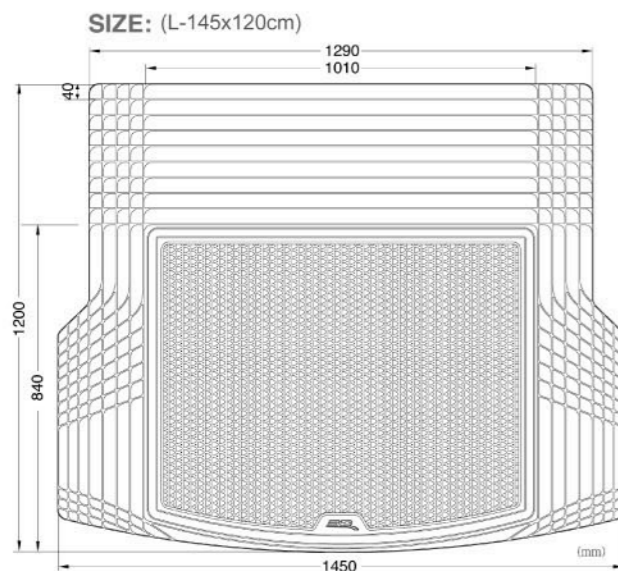


Universal CARGO LINER

- Cut-to-fit trim lines fit most of Cars and SUVs
- Traps debris, moisture and keeps cargos from sliding
- Waterproof, easy cleaning
- Patented Maxpider backing keeps the liner firmly in place
- Made with eco-friendly materials, strong, durable but light-weight

Universal Cargo Liner

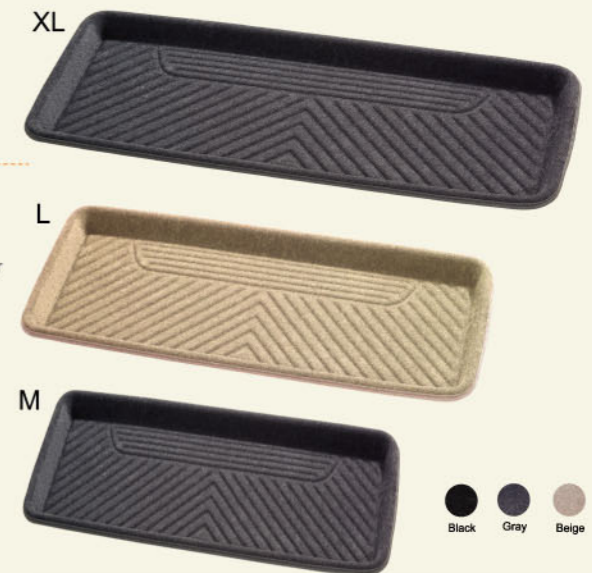
Item No.: 2175
 Size: M 136x92.4cm
 L 145x120cm
 Material: TPR+XPE+Polyester



MPP Series MULTIPURPOSE PLATES

- Protection** Prevents stains and dirt penetrating your original carpet. Increases your vehicles resale value by keeping it clean.
- Easy to install** Lift and put.
- Easily clean** Vacuum or hose clean.

- 100% waterproof** Great for winter snow or summer rain. The surface material will absorb water.
- Cushion effect** Great comfort for feet rest.
- Safety** Anti-skid bottom layer.
- Easy maintenance** Lightweight and easy for handling, cleaning by vacuum or just hose it.
- Suitable for Van's 2nd and 3rd row mat or trunk mat.**
- Suitable for home and door entrance.**



Long Mat

Item No.: 2333
 Size: M 40x100cm
 L 40x125cm
 XL 40x147cm
 Material: TPR+Polyester

Multipurpose 3D Plate

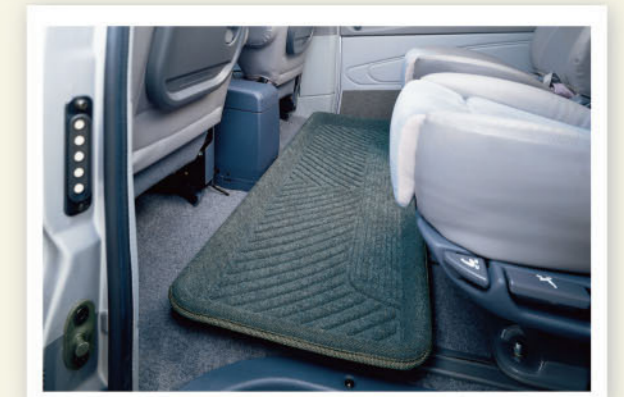
Item No.: 2085
 Size: S 50x90x5cm M 70x90x5cm
 L 85x90x5cm XL 100x90x5cm
 Material: XPE

Multipurpose 3D Plate

Item No.: 2083
 Size: M 70x90x5cm
 Material: TPR+XPE+Polyester



China Patent No.: ZL200920268859.5, ZL200920268923.6
 Taiwan Patent No.: M382997, M381550
 Russia Patent No.: 2415034, 2413800
 South Africa Patent No.: 2010/00458
 Czech Republic Patent No.: 21638
 Nigeria Patent No.: NG/C10/431
 Korea Patent No.: 10-1051591
 Iran Patent No.: 70463
 Worldwide Patented or Patent Pending (42 Countries)
ISO/TS 16949





DIY MAXpider
Multimat

RECREATION SERIES

MAXpider DIY Multimat

Item No.: 2333A
Material: TPR + XPE + Polyester
Color: Black / Beige / Gray

The three-dimensional configured triangle pattern collects dust, moisture and has an excellent stain repellent property. The DIY trimmable design allows a perfect fitting of any particular shape. The patented "MAXpider" skid-resistant design is safe and does not shift, offering optimal protection. Excellent air ventilating properties help to prevent moisture and bacteria accumulation in the car mats. Not only it is ideal for the liner, but can also be used with household carpets and doormats. It has a versatile skid-resistance function ideal for all carpeted areas in the car, at home or in the office.



3D MultiGuard

Item No.: 2388
Size: S - L150 x W75cm
M - L150 x W105cm
L - L150 x W130cm
Customized - max. width 170cm
(thickness: 3mm)
Materials: TPR+XPE+Polyester
Color: Black

Three-Layer Structure with Patented MAXpider Material

MultiGuard contains a wear resistant TPR surface layer providing a classy look, an XPE inner layer offering the necessary cushion and shock absorbercy, and the exceptional anti-skid MAXpider bottom layer gripping firmly on the carpet. It gives your vehicle the protection needed while loading or unloading.



Multifold Application

MultiGuard not only fits all vehicles through DIY, but is also applicable on any indoor carpet to use as doormat, fitness equipment under-layer, etc.

Carpet protection



Doorway



Car interior



Indoor fitness



Durable TPR material
Waterproof, shock absorbent & sound insulating barrier
Anti-skid MAXpider material grips on the carpet and stays firmly for ultimate safety



HANDY TRUNK

Lightweight · Handy · Compact · Foldable · Portable

- 3D design for maximum storage : Multiple applications for cars, camping, home use, and other occasions.
- Special reinforced material : durable, water-resistant, recyclable & environmentally friendly.



Remark: w/o elastic straps for No.: 9334

Japan Patent No.: 3114069
China Patent No.: ZL200520109578.71, ZL200530130118.8
Taiwan Patent No.: M280357, D111502
Worldwide Patent Pending

Easy-storage Build-up within seconds



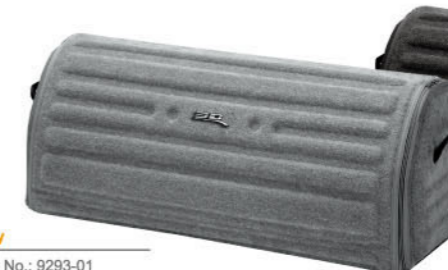
Beige

Item No.: 9334-02
Size: L44 x W39 x H35cm
Material: Polyester + TPR



Gray

Item No.: 9334-01
Size: L44 x W39 x H35cm
Material: Polyester + TPR



Gray

Item No.: 9293-01
Size: L81 x W30 x H31cm
Material: Polyester + TPR



Black

Item No.: 9293-09
Size: L81 x W30 x H31cm
Material: Polyester + TPR



Black

Item No.: 9334-09
Size: L44 x W39 x H35cm
Material: Polyester + TPR



Pink

Item No.: 9334-04
Size: L44 x W39 x H35cm
Material: Polyester + TPR



Black

Item No.: 9324-09
Size: L46 x W30 x H31cm
Material: Polyester + TPR



Beige

Item No.: 9324-02
Size: L46 x W30 x H31cm
Material: Polyester + TPR



VEHICLE SEATCOOLING PAD

Cool down the seat temperature instantly.

- Immediate interior temperature drop on hot sunny days.
- Cools down the driver.
- Installs easily without altering the original seat structure.
- Universal and adaptable to any car model.

- Item No : 3123-09
- Material : 3-Layer structure
Upper Layer: Breathable mesh
Middle Layer: EVA air guidance cushion
Lower Layer: Anti skid
Fan: 6500rpm Adjustable speed control
Electricity: Cigarette lighter adapter



3D LOHAS BREEZE CUSHION (Seat & Back)

Lifestyle of Health and Sustainability
Cooling • Comfort • Aesthetics

- Cooling: Cool air circulates through the seat / waist / back of the breathable mesh material via built-in fan. It's ventilated, not humid, and very cool.
- Comfort: Made of breathable material with a cushioning effect and a unique anti-skid bottom layer, which prevents the cushion from sliding and provides maximum comfort.
- Aesthetics: The chic patterns and colors contribute to its modern design. The ergonomic design also helps with long distance driving and prevents fatigue.



Easy to install DC-powered fan



STORE DISPLAY RACKS

For your presentation of our star product, a series of exhibition display and hanging racks are available for stores and trade show use.



3D MPP Display Box

Item No.: 8501
Quantity: 25 PCS

DIY Multimat Display Rack

Item No.: 8507
Quantity: 9 Sets



Wire Display Rack

Item No.: 8502
Quantity: 30 PCS



DIY Multimat Display Rack

Item No.: 8508
Quantity: 12 Sets



Wire Display Rack

Item No.: 8503-BS
W63xH190xL50 cm
W24.8xH74.8xL19.7 inch



Display Case

Item No.: 8504-B
W144xH178xL149.5 cm
W56.7xH70.1xL58.9 inch

Display Case

Item No.: 8504-A
W144xH178xL88 cm
W56.7xH70.1xL34.6 inch



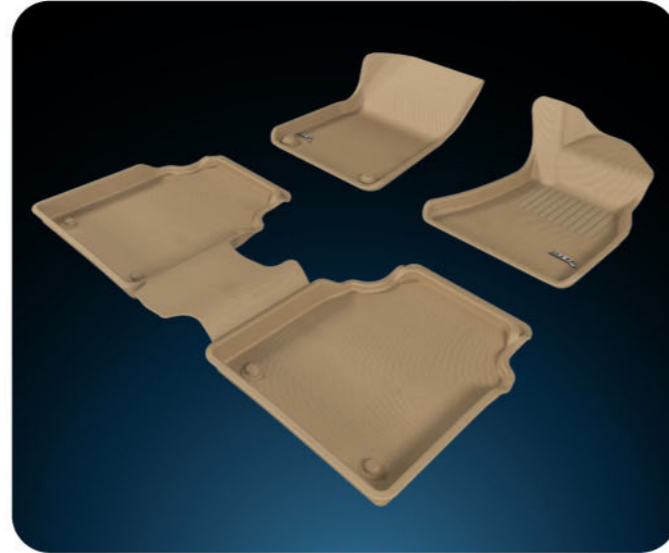
AUDI Body Type SUV Product Code RAD0040
Q7 2006~ 6 Pc(s)



AUDI Body Type SUV Product Code RAD0090
Q5 2009~ 5 Pc(s)



AUDI Body Type SEDAN Product Code RAD0060
A6(C6) 2005~2011 5 Pc(s)



AUDI Body Type SEDAN Product Code RAD0170
A8L 2011~ 5 Pc(s)



AUDI Body Type SEDAN Product Code RAD0070
A4(B8) 2008~ 5 Pc(s)



BMW Body Type SEDAN Product Code RBM0060
3 Series (E90) / M 2005~ 5 Pc(s)



BMW Body Type SEDAN Product Code RBM0040
5 Series (E60) / M 2004~2010 5 Pc(s)



BMW Body Type SUV Product Code RBM0120
X3 (E83) / M 2003~2010 5 Pc(s)



BMW Body Type SEDAN Product Code RBM0020
7 Series (E65) 2001~2008 5 Pc(s)



BMW Body Type SUV Product Code RBM0100
X5 (E70) / M 2007~ 3 Pc(s)



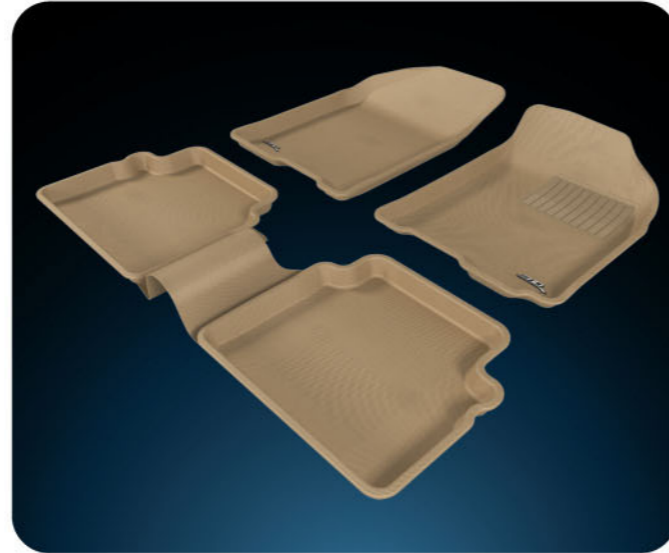
BMW Body Type SEDAN Product Code RBM0140
7 Series-Li (F02)(F04) 2009~ 5 Pc(s)



BMW Body Type SEDAN Product Code RBM0260
5 Series (F10) / M 2010~ 5 Pc(s)



BMW Body Type SUV Product Code RBM0170
X1 (E84) 2009~ 5 Pc(s)



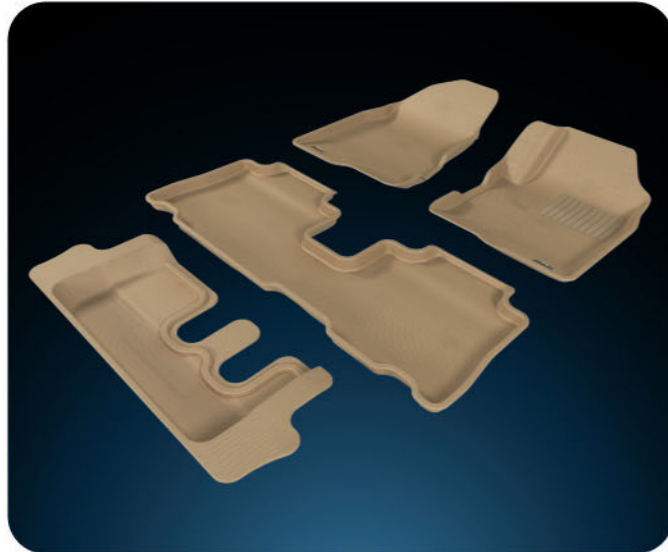
CHEVROLET Body Type SEDAN Product Code RCH0080
Aveo (T250) 2008~ 5 Pc(s)



BMW Body Type SEDAN Product Code RBM0230
7 Series (F01) SWB 2009~ 5 Pc(s)



CHEVROLET Body Type SEDAN Product Code RCH0090
Optra 2002~2009 5 Pc(s)



CHEVROLET Body Type SUV Product Code RCH0070
Captiva 2006~ 3 Pc(s)



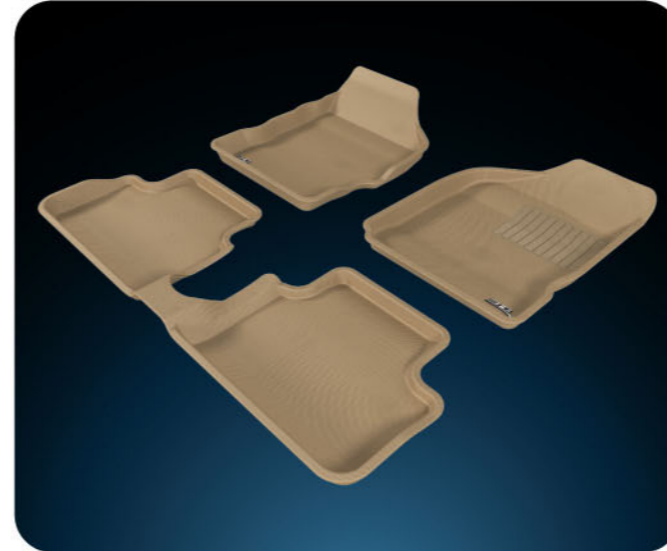
CHEVROLET Body Type SEDAN Product Code RCH0100
Cruze 2009~ 5 Pc(s)



CHEVROLET Body Type Hatchback Product Code RCH0150
Beat 2009~ 3 Pc(s)



FIAT Body Type H3 Product Code RFA0020
Grand Punto 2005~ 3 Pc(s)



CHEVROLET Body Type Hatchback Product Code RCH0200
Spark 2007~ 3 Pc(s)



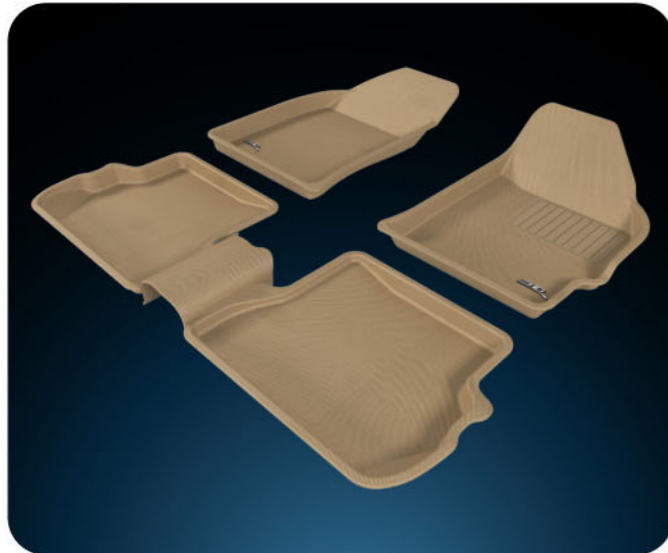
FIAT Body Type Hatchback Product Code RFA0030
500 2007~ 5 Pc(s)



FIAT Body Type SEDAN Product Code RFA0010
Linea 2007~ 3 Pc(s)



FORD Body Type SUV Product Code RFR0090
Everest 2003~ 5 Pc(s)



FORD Body Type Hatchback Product Code RFR0150
Figo 2010~ 5 Pc(s)



FORD Body Type Hatchback Product Code RFR0340
Fiesta 2010~ 5 Pc(s)



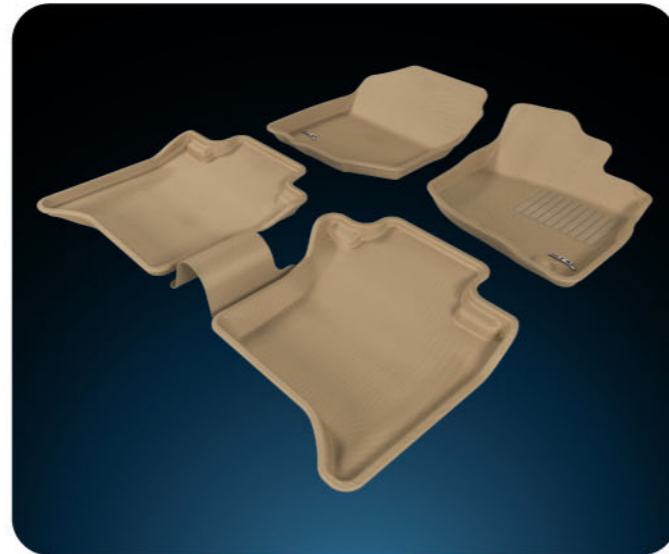
FORD Body Type SUV Product Code RFR0190
Endeavour 2003~ 6 Pc(s)



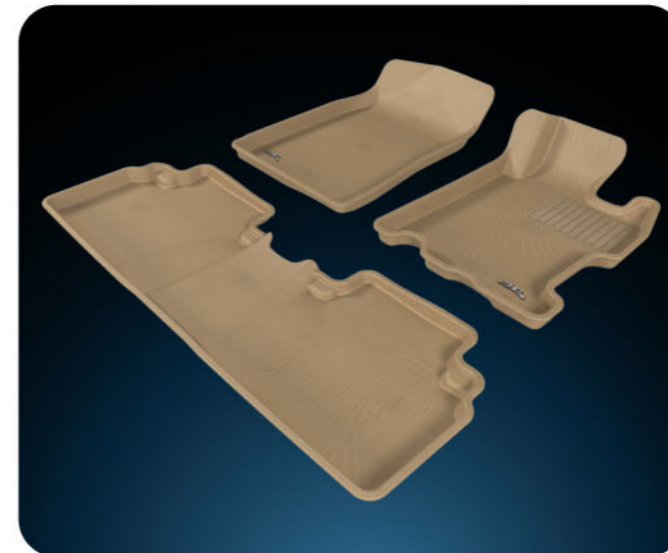
HONDA Body Type SEDAN Product Code RHD0080
Accord-VIII 2008~ 5 Pc(s)



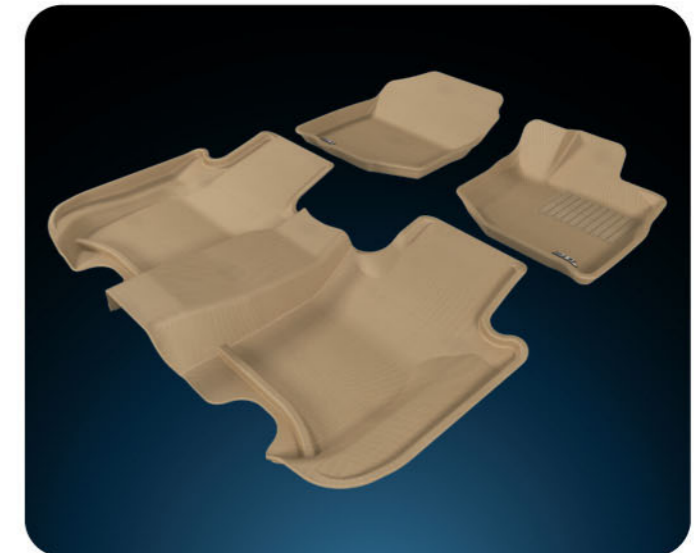
FORD Body Type Hatchback Product Code RFR0120
Fiesta Classic 2010~ 5 Pc(s)



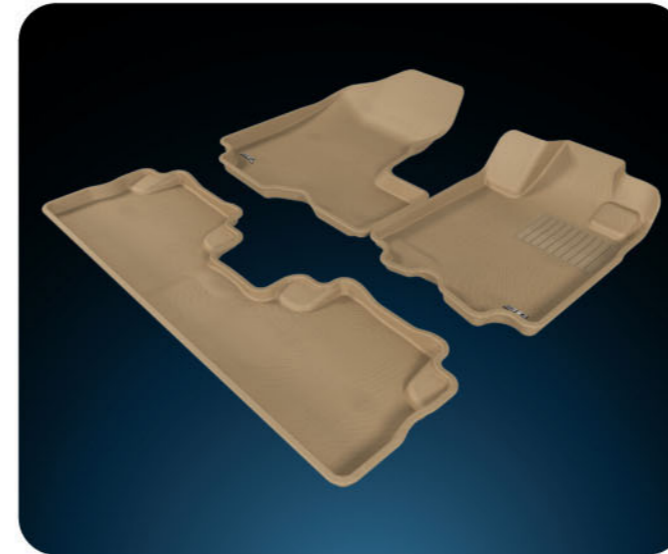
HONDA Body Type SEDAN Product Code RHD0170
City 2008~ 5 Pc(s)



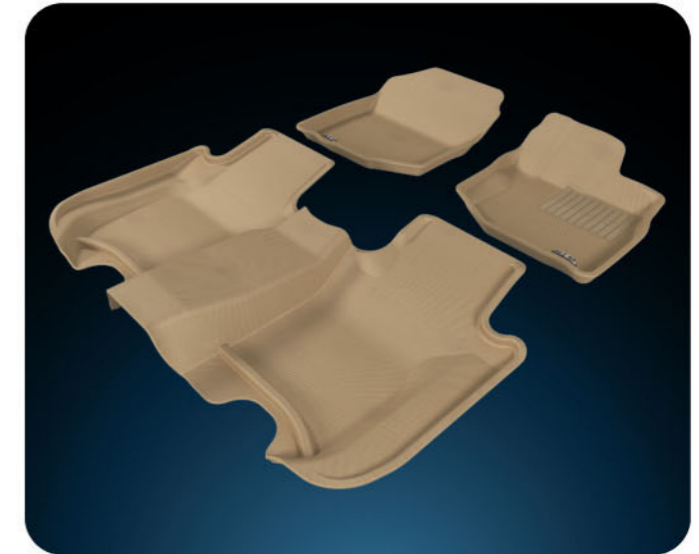
HONDA Body Type SEDAN Product Code RHD0070
Civic-VIII 2006~ 3 Pc(s)



HONDA Body Type Hatchback Product Code RHD0160
Jazz-II / FIT-II 2008~2011 3 Pc(s)



HONDA Body Type SUV Product Code RHD0130
CRV-III 2007~ 3 Pc(s)



HONDA Body Type Hatchback Product Code RHD0420
JAZZ/ Fit 2012~ 3 Pc(s)



HONDA Body Type Hatchback Product Code RHD0000
Jazz 2001~2008 3 Pc(s)



HUMMER Body Type SUV Product Code RHE0020
H2 2002~2009 3 Pc(s)



HYUNDAI Body Type Hatchback Product Code RHY0310
I20 2008~ 3 Pc(s)



HYUNDAI Body Type Hatchback Product Code RHY0350
Getz 2002~2010 3 Pc(s)



HYUNDAI Body Type SEDAN Product Code RHY0110
Verna 2005~2010 5 Pc(s)



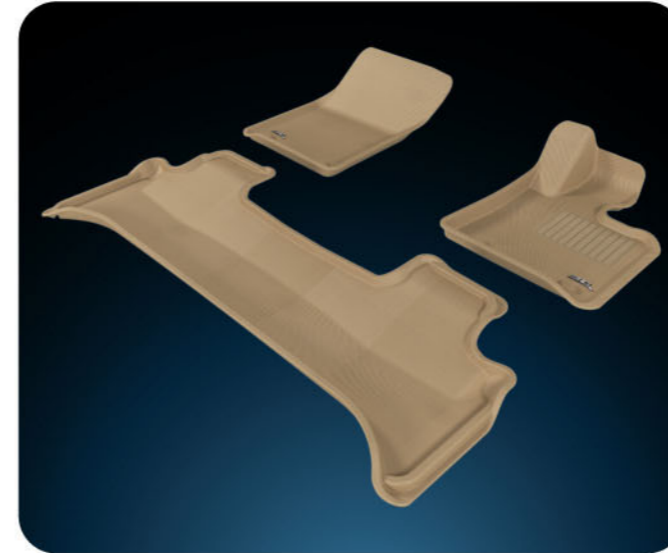
HYUNDAI Body Type SEDAN Product Code RHY0390
Accent 2002~ 3 Pc(s)



HYUNDAI Body Type Hatchback Product Code RHY0320
I10 2009~ 5 Pc(s)



HYUNDAI Body Type SUV Product Code RHY0410
Santa Fe 2006~ 4 Pc(s)



LAND ROVER Body Type SUV Product Code RLR0030
Lange Rover Range Rover 2010~ 3 Pc(s)



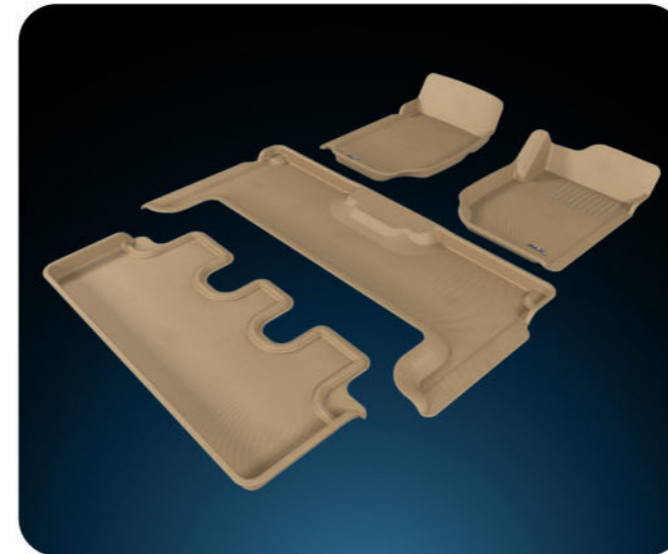
MAHINDRA Body Type SUV Product Code RMH0020
Scorpio 2006~ 3 Pc(s)



LAND ROVER Body Type SUV Product Code RLR0010
Freelander 2 2007~ 5 Pc(s)



MERCEDES-BENZ Body Type SEDAN Product Code RMB0090
C Class (W204) 2007~ 5 Pc(s)



MAHINDRA Body Type MPV Product Code RMH0010
Xylo 2009~ 4 Pc(s)



MERCEDES-BENZ Body Type SEDAN Product Code RMB0110
E Class (W212) 2009~ 5 Pc(s)



MERCEDES-BENZ Body Type **SEDAN** Product Code **RMB0020**
S Class (W220) 1998~2006 5 Pc(s)



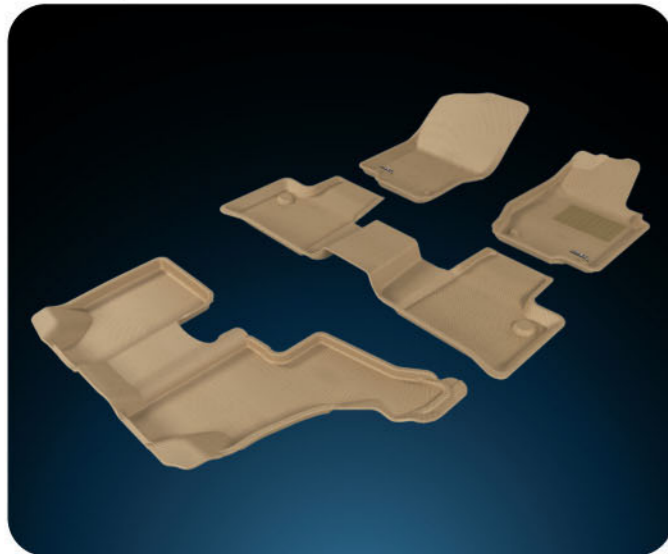
MERCEDES-BENZ Body Type **SEDAN** Product Code **RMB0060**
S Class L (W221L) 2007~ 5 Pc(s)



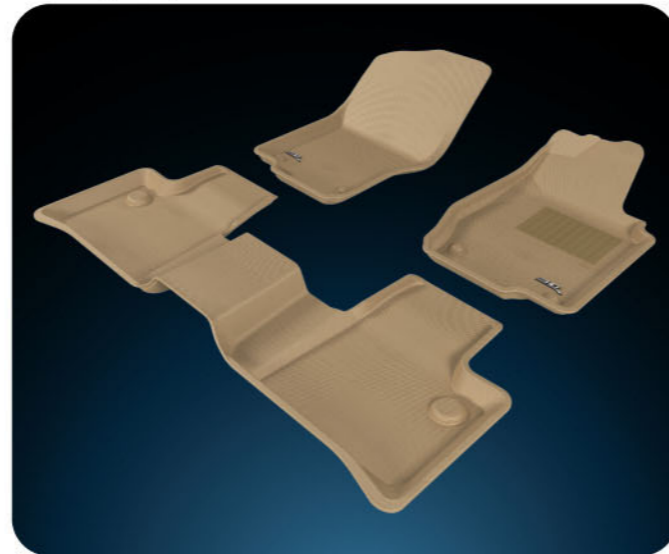
MERCEDES-BENZ Body Type **SEDAN** Product Code **RMB0030**
S Class L (W220L) 1998~2006 5 Pc(s)



MERCEDES-BENZ Body Type **C2** Product Code **RMB0150**
E Class (C207) 2009~ 5 Pc(s)



MERCEDES-BENZ Body Type **SUV** Product Code **RMB0130**
GL Class(X164) 2006~ 4 Pc(s)



MERCEDES-BENZ Body Type **SUV** Product Code **RMB0080**
ML Class 350 (W164) 2006~ 3 Pc(s)



MITSUBISHI Body Type **SUV** Product Code **RMT0240**
Outlander 2010~ 3 Pc(s)



NISSAN Body Type **SEDAN** Product Code **RNS0220**
Teana 2009~ 5 Pc(s)



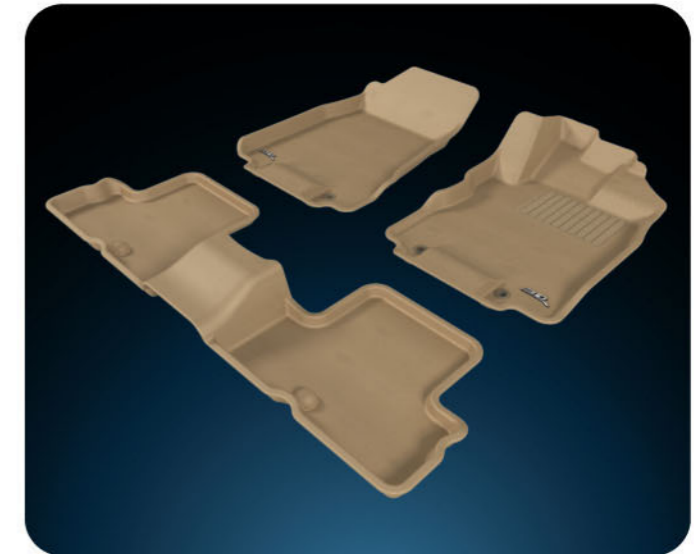
MITSUBISHI Body Type **SEDAN** Product Code **RMT0250**
Cedia 2010~ 5 Pc(s)



NISSAN Body Type **SUV** Product Code **RNS0020**
X-Trail 2003~2007 5 Pc(s)



MITSUBISHI Body Type **SUV** Product Code **RMT0260**
Pajero SFX 2007~ 3 Pc(s)



NISSAN Body Type **SUV** Product Code **RNS0190**
X-Trail 2008~ 3 Pc(s)



NISSAN Body Type Hatchback Product Code RNS0250
Micra 2010~ 5 Pc(s)



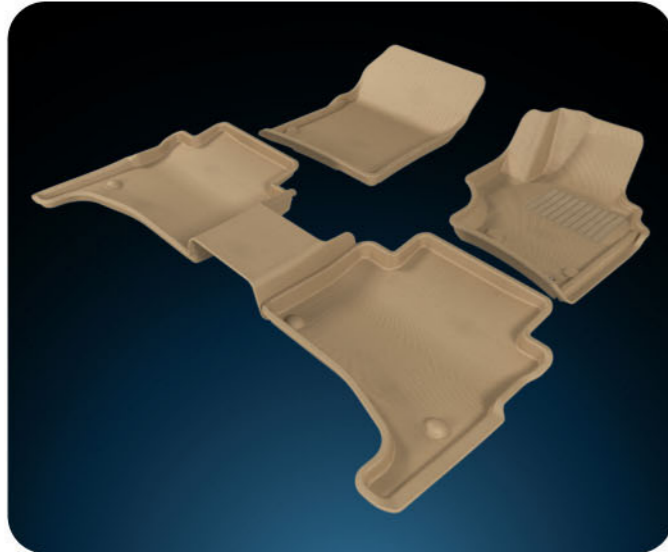
SKODA Body Type SEDAN Product Code RSK0040
Laura (MK2) 2004~ 5 Pc(s)



SKODA Body Type SEDAN Product Code RSK0030
Super-b 2009~ 5 Pc(s)



Maruti SUZUKI Body Type Hatchback Product Code RSZ0020
Swift 2005~2010 5 Pc(s)



PORSCHE Body Type SUV Product Code RPO0000
Cayenne (955) 2002~2007 4 Pc(s)



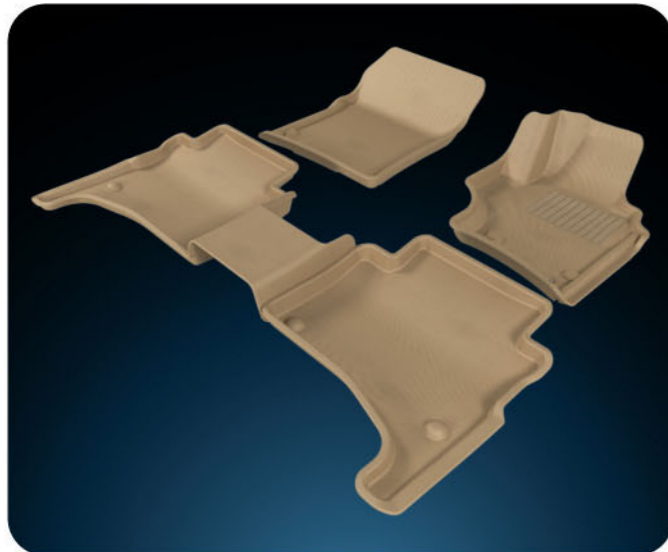
SKODA Body Type Hatchback Product Code RSK0020
Fabia 2007~ 3 Pc(s)



SKODA Body Type SUV Product Code RSK0050
Yeti 2009~ 5 Pc(s)



Maruti SUZUKI Body Type H4 Product Code RSZ0090
Wagon R 2010~ 3 Pc(s)



PORSCHE Body Type SUV Product Code RPO0040
Cayenne (957) 2008~2010 4 Pc(s)



SKODA Body Type SEDAN Product Code RSK0000
Octavia 2004~ 4 Pc(s)



Maruti SUZUKI Body Type SUV Product Code RSZ0050
SX4 2006~ 4 Pc(s)



Maruti SUZUKI Body Type SEDAN Product Code RSZ0120
Kizashi 2010~ 3 Pc(s)



TATA Body Type SUV Product Code RTT0010
Safari 2005~ 3 Pc(s)



TOYOTA Body Type SEDAN Product Code RTY0160
Corolla Altis (E140) 2008~ 3 Pc(s)



TOYOTA Body Type MPV Product Code RTY0220
Innova 2005~ 6 Pc(s)



TOYOTA Body Type Hatchback Product Code RTY0400
Prius 3 2009~ 3 Pc(s)



TATA Body Type SEDAN Product Code RTT0020
Manza 2009~ 5 Pc(s)



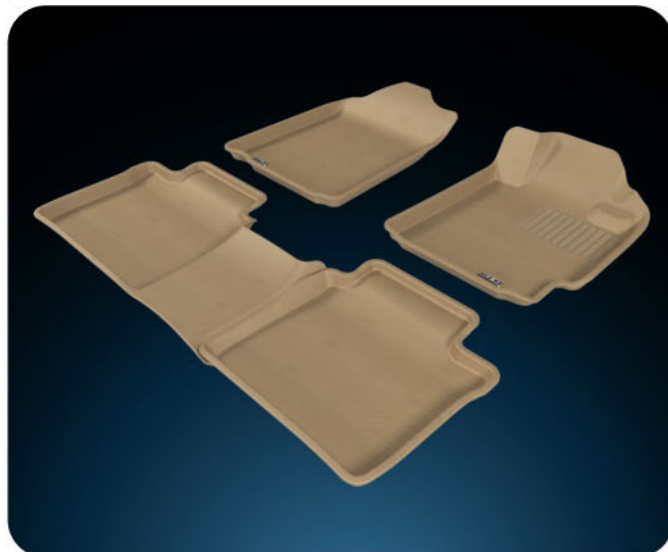
TOYOTA Body Type SEDAN Product Code RTY0010
Corolla Altis 1.8 2001~2007 5 Pc(s)



TOYOTA Body Type SUV Product Code RTY0020
Land cruiser 1998~2007 4 Pc(s)



TOYOTA Body Type SEDAN Product Code RTY0740
Etios 2011~ 3 Pc(s)



TOYOTA Body Type SEDAN Product Code RTY0040
Camry 2007~2011 4 Pc(s)



TOYOTA Body Type MPV Product Code RTY0190
Fortuner 2005~ 6 Pc(s)



TOYOTA Body Type SUV Product Code RTY0420
Prado 150 2010~ 4 Pc(s)



VOLKSWAGEN Body Type SEDAN Product Code RVW0010
Jetta 2004~2011 5 Pc(s)



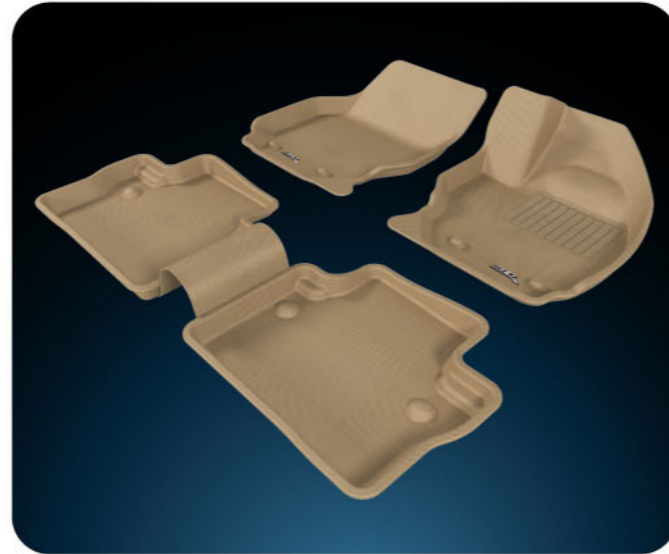
VOLKSWAGEN Body Type **SEDAN** Product Code **RVW0260**
Passat 2009~ 5 Pc(s)



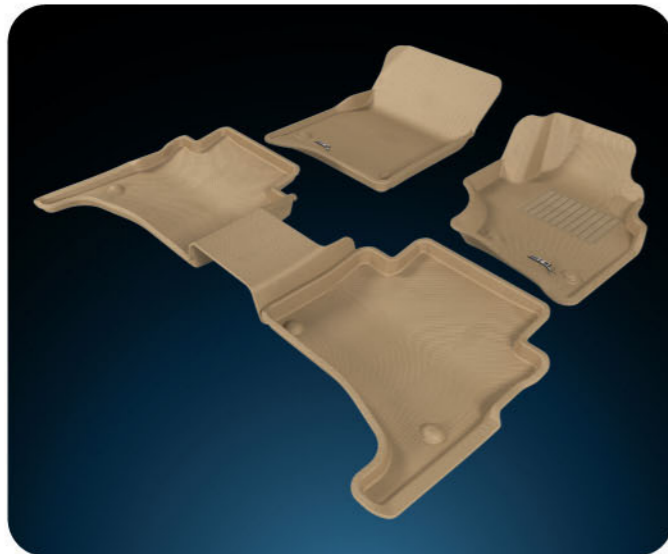
VOLKSWAGEN Body Type **SEDAN** Product Code **RVW0320**
Vento 2010~ 5 Pc(s)



VOLKSWAGEN Body Type **Hatchback** Product Code **RVW0270**
Polo 2009~ 5 Pc(s)



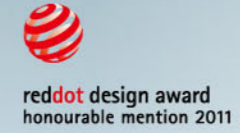
VOLVO Body Type **SEDAN** Product Code **RVW0020**
S80-II 2007~ 5 Pc(s)



VOLKSWAGEN Body Type **SUV** Product Code **RVW0280**
Touareg 2007~ 4 Pc(s)



VOLVO Body Type **SUV** Product Code **RVW0040**
XC90 (5~7 seats) 2003~ 6 Pc(s)



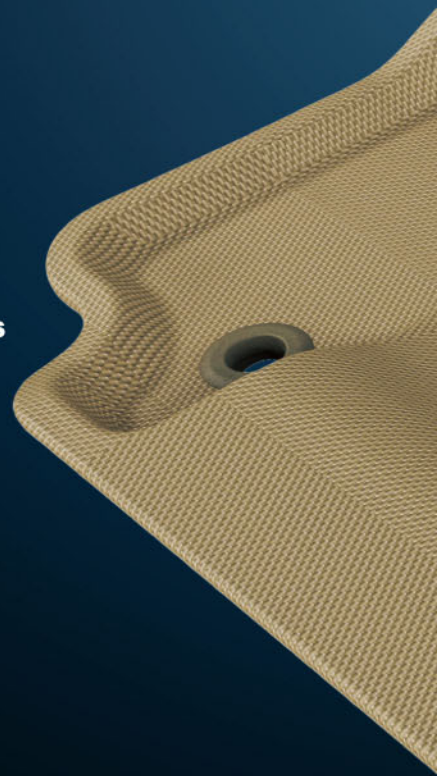
RECOGNITION

- ISO 9001 Certification to Pingtung Factory
- TS 16949 Certification to Kunshan Factory
- 2007 Taiwan Good Design Product Award
- 2007 China Car Magazine recommended product (3D car mat)
- 2008 China Car Magazine recommended product (KAGU car mat)
- 2011 Golden Pin Design Mark
- 2011 German reddot design award (3D MAXpider cargo liner)
- Numerous innovations are patented in various countries

EXPERT IN CAR
Accessories



Exclusively
imported & marketed in India by Hot Tracks
www.hottracks.in



FORMOSA SAINT JOSE CORP.

No.319 JiaShing St, Da-an District Taipei 10675, Taiwan

Tel · 886-2-2732-7219 Fax · 886-2-2736-2591

www.3dmats.com